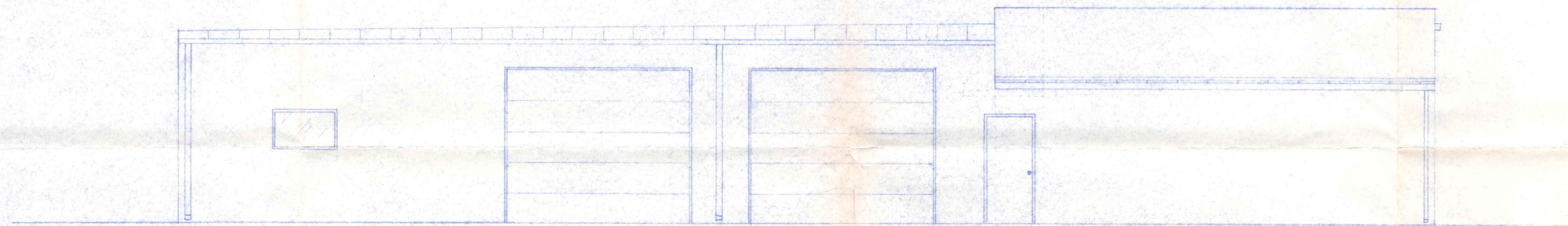
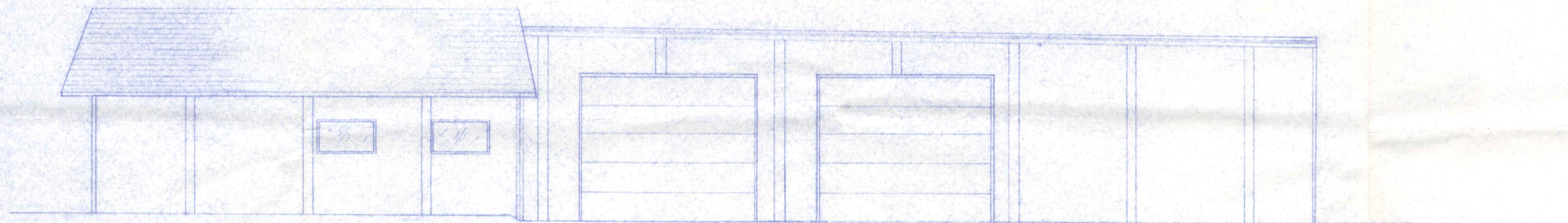


W



S



N

301 E Livermore Ave

HAWKS PIZZA + DRIVE-THRU		
RT. 424 E. NAPOLEON, OHIO		
SCALE: 1/4" = 1'-0"	APPROVED BY:	DRAWN BY:
DATE: 10/30/84		REVISED:
BY MEL LANZER CO., GENERAL CONTRACTOR		DRAWING NUMBER
2266 N. SCOTT ST., NAPOLEON, OHIO		A-2
ELEVATIONS		